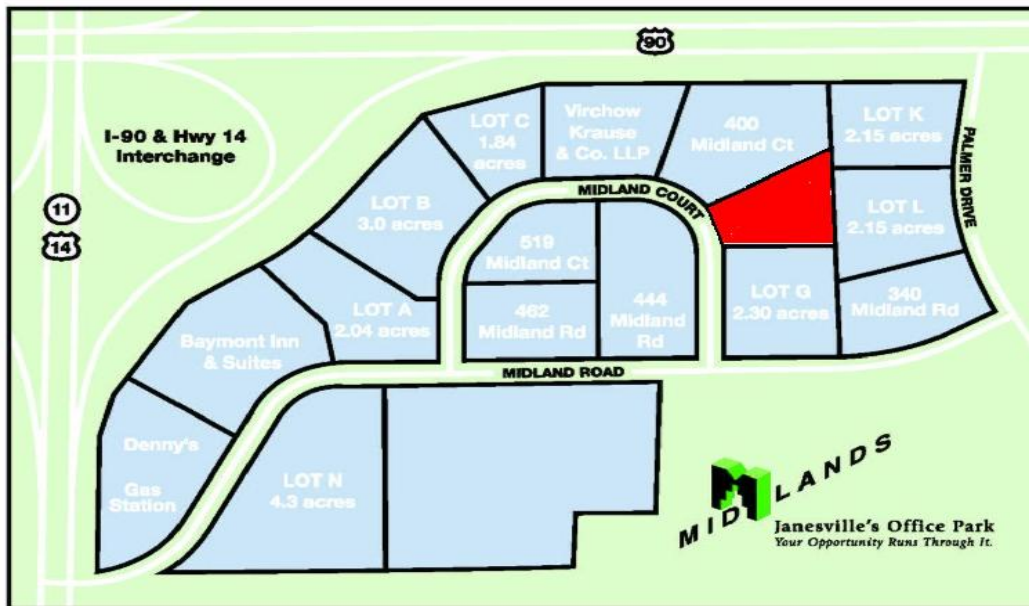




Tier 3 Data Center

(Janesville, WI) - [Data Dimensions](#), a second-generation privately-held company and recognized leader in business process optimization solutions and services, announced that it will construct a new 20,000 SF state-of-the-art Tier 3 data center in the Midlands Office Park. The data center is projected to open in early 2010, with the capacity to expand employment up to approximately 250 positions.

"The addition of this facility will significantly increase our operations capacity, enabling us to better serve our clients, meet the demands of the continued growth we are experiencing, expand our workforce, and continue to contribute to the community," said Mark Bush, Chairman. "Although initial employment numbers will be around 50, we are building the facility with the intention of filling it."



[Barry Badertscher](#), [McGuire Mears & Associates](#), represented the buyer and seller in this transaction.

Architectural and design services for the project were provided by [Angus Young & Associates](#), while [Corporate Contractors, Inc.](#) is acting as the project's general contractor.

According to [James Otterstein](#), Rock County Economic Development Manager, "This project reinforces the message that the Janesville-Beloit MSA has repositioned itself for continued economic diversification. Historically recognized as one of Wisconsin's premier manufacturing centers, Rock County is also a location where technology and commercialization converge. Data Dimensions successfully incubated their technology applications locally and now it's recognized globally. Rock County looks forward to nurturing Data Dimensions, as well as facilitating other technology-orientated firms, growth and sustainability."