

ROCK READY INDEX

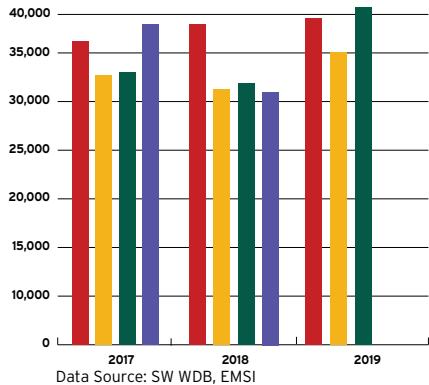


ECONOMIC DEVELOPMENT DASHBOARD REPORT FOR ROCK COUNTY, WISCONSIN

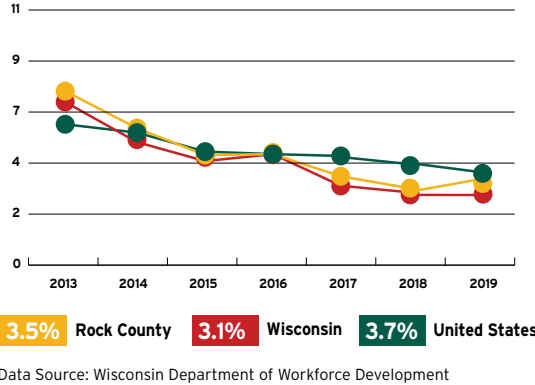
Q3 2019

Workforce

Job Posting Activities



Annual Unemployment

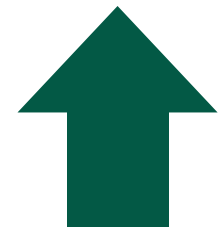
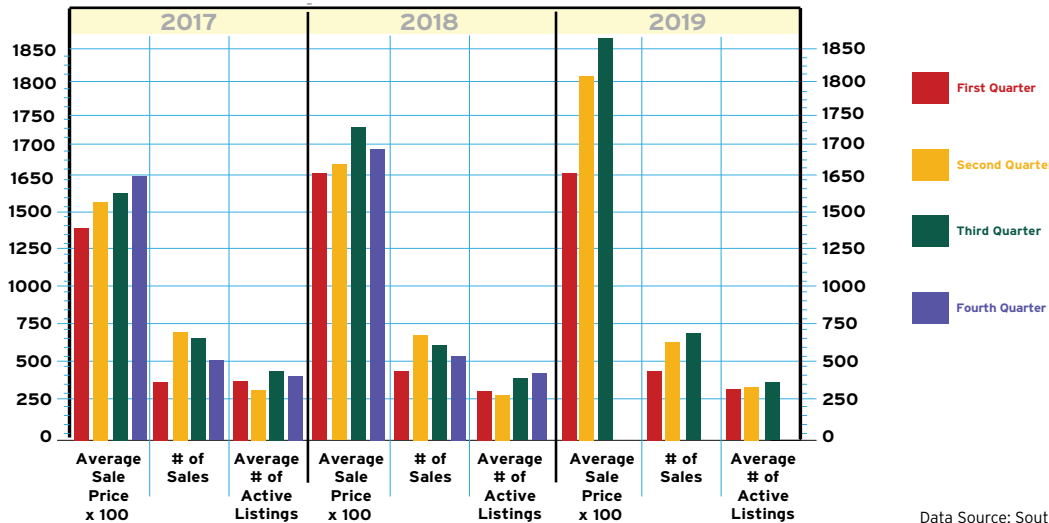


Rates Holding Firm

Considering a Job or Career Change? Apply Today!

Real Estate

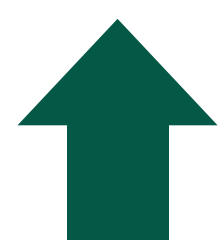
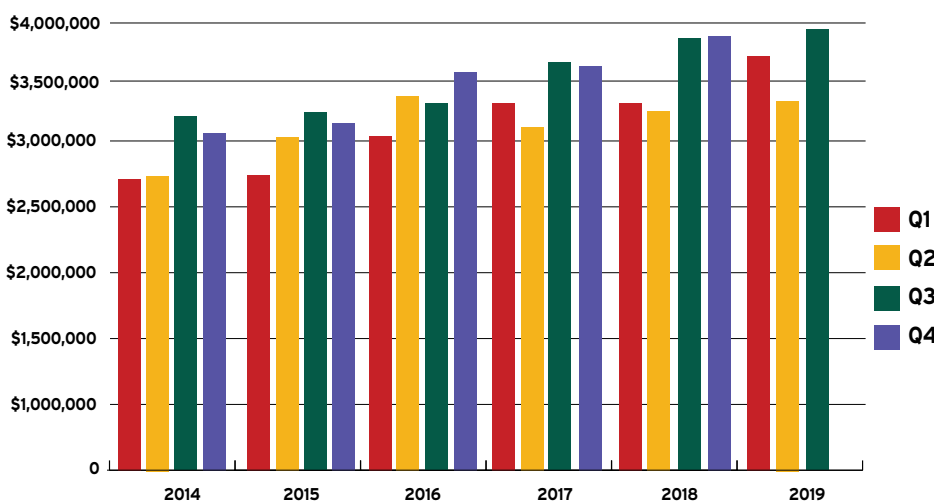
Residential Market Activity



Highest Price Points Ever Recorded

Sales Activity

Rock County Sales & Use Tax Collections

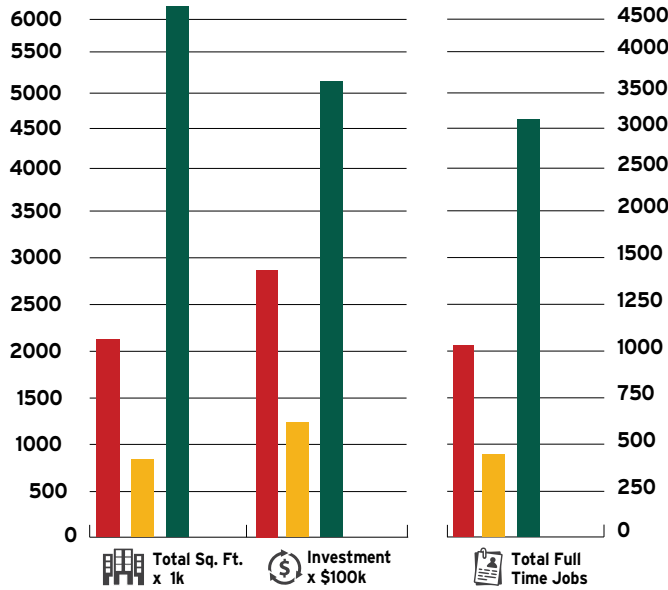


New All-Time & Quarterly Benchmark

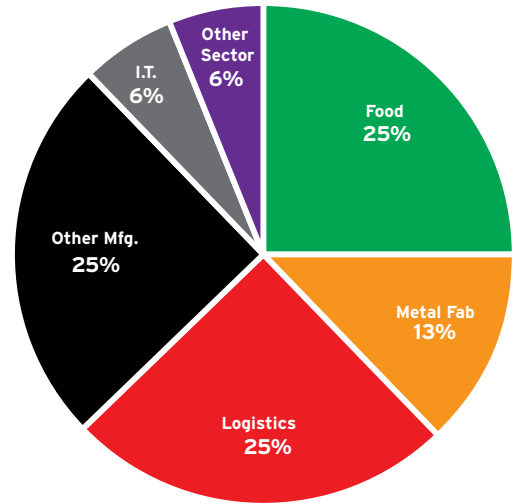
This information was collected from primary and secondary data sources deemed reliable. Please note that this information is subject to change without notice.

Economic Development Pipeline

Real Estate, Investment & Employment Impacts



Industry Sectors



Strong Demand Keeps the Pipeline Stocked with Opportunities

Source: RCDA ED Project Tracker, which provides an aggregate snapshot of the industrial/warehousing and select commercial development opportunities expressing an interest in SC WI, the Janesville-Beloit MSA and/or the Stataline area.

Project Profile

DEVELOPING MULTI-FAMILY INVENTORY IS A WORKFORCE AND ECONOMIC DEVELOPMENT ASSET

In response to an overall housing shortage, several multi-family developments in Beloit, Janesville and Milton have been approved and/or begun construction during the second half of 2019. A sampling of these projects, which represent a range from affordable to market-rate offerings, are highlighted below.

Hawk's Ridge Apartments, which overlook Beloit's Gateway Business Park, added 58 units and construction on another 75 units is underway. In the City's Central Business District, Hendricks Commercial Properties began demolition activities at its West Grand Ave. location in preparation for constructing an apartment building that will house more than 50 units. Meanwhile, condominium and townhome permitting, as well as construction, activities are in-motion in both the City and Town.

In Janesville, nearly 500 new multi-family units are projected by 2024. The first phase of the Glade, a 260 unit apartment complex near the Racine Street Interchange, is under construction. Meanwhile, another 115 units are planned at Diamond Ridge – near the Milton Ave. and Kennedy Road corridor. A 92 unit complex, known as River Flats, is proposed for downtown near City Hall.

Then in Milton's Red Hawk Apartment complex, more than 100 units are planned for the intersection of Parkview and Blanche Drives. This development will feature 72 one-bedroom, 24 two-bedroom and 12-three bedroom apartments.

