

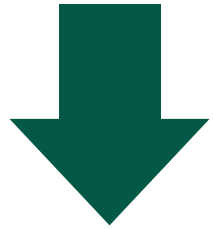
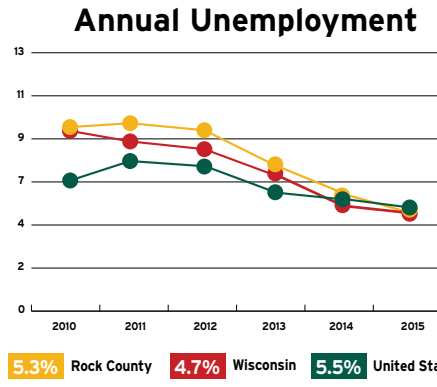
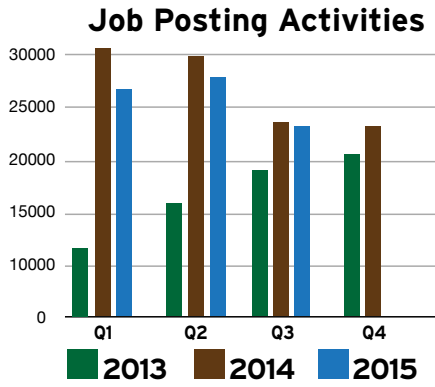
# ROCK READY INDEX



ECONOMIC DEVELOPMENT DASHBOARD REPORT FOR ROCK COUNTY, WISCONSIN

Q3 2015

## Workforce



**Lowest Unemployment Rates in 10 years**

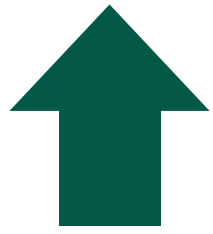
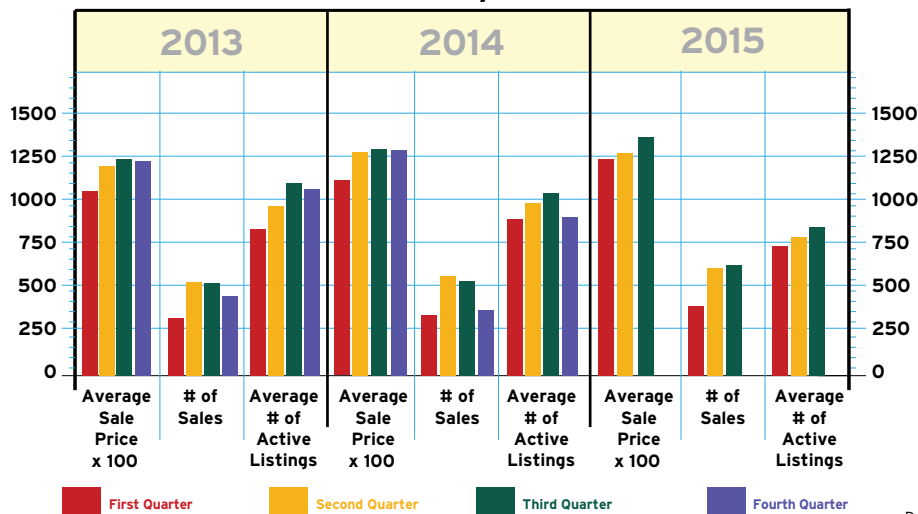
**Hiring Demands Remain Active**

Data Source: SW WDB, WANTED Analytics

Data Source: Wisconsin Department of Workforce Development

## Real Estate

### Residential Market Activity

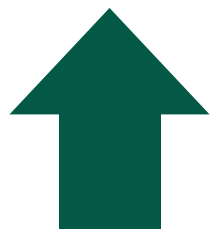
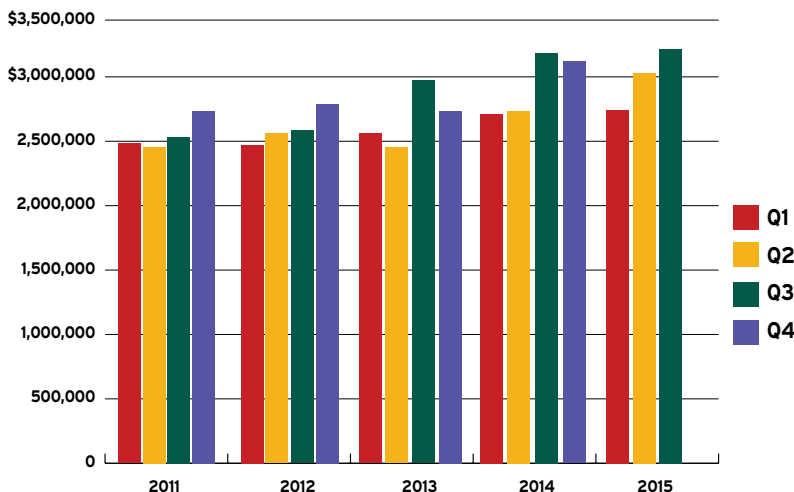


**Strong Pricing & Transaction Activities**

Data Source: South Central Wisconsin MLS Corporation

## Sales Activity

### Rock County Sales & Use Tax Collections



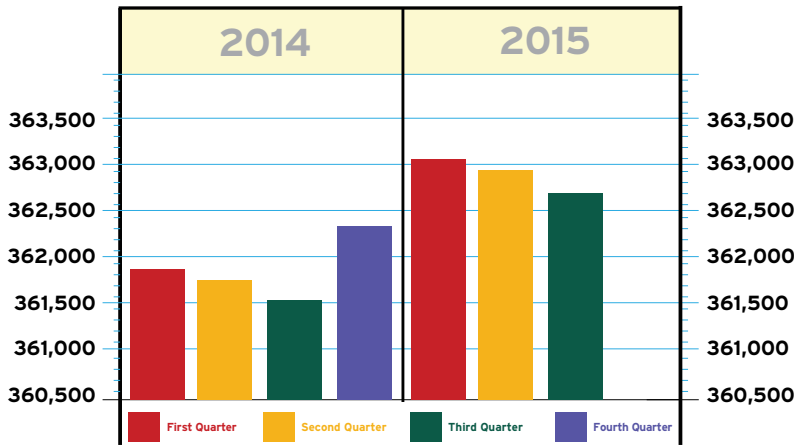
**Another Record Quarter**

Data Source: Wisconsin Department of Revenue

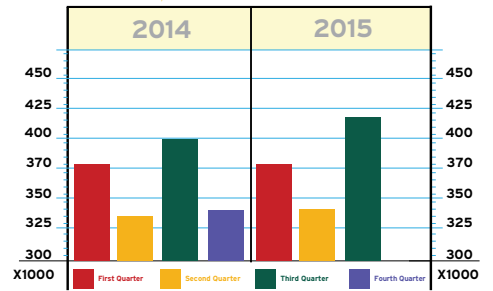
This information was collected from primary and secondary data sources deemed reliable. Please note that this information is subject to change without notice.

**Meter & Usage Data**

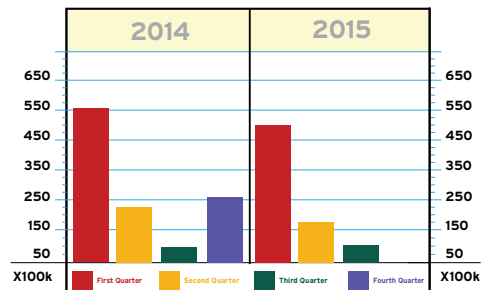
## # of Electric & Gas Meters



## kWh Usage



## Therms Usage



## Meter & Usage Activities Reflect Growth, Seasonality

Data Source: Alliant Energy / WI Power & Light

**Project Profile**



**A.M. Castle**

Construction activities are rapidly progressing in Janesville's East Side Business Park on A.M. Castle & Co.'s 208,000 SF, build-to-suit facility. Castle is a global distributor of specialty metal and plastic products, value-added services, and supply chain solutions. Hiring and training activities are already in progress and when fully operational, Castle expects to have up to 90 full-time employees.

A group of local investors will own and lease the building back to A.M. Castle.

To facilitate this project, financial support was provided by Johnson Bank, the City of Janesville, the Wisconsin Economic Development Corporation and Alliant Energy/WP&L.



**Charter NEX Films**

Charter NEX Film is expanding again, by adding 25,000 SF on the west side and 66,000 SF on the east side of its Milton's campus. Once this 91,000 SF, multi-million dollar expansion is complete, the company expects to add another 50+ full-time individuals.

Roughly 20 years ago, Charter NEX Films established its Milton operation. The company manufactures monolayer, coextruded and barrier blown films for a wide variety of high-performance food, industrial and medical packaging applications.

To facilitate this project, the City approved a Conditional Use Permit and financial support was provided by the Wisconsin Economic Development Corporation.

# Rock County Wisconsin

DEVELOPMENT ALLIANCE



For additional information visit:

**RockCountyAlliance.com**  
**608 · 757 · 5598**