

# ROCK READY INDEX

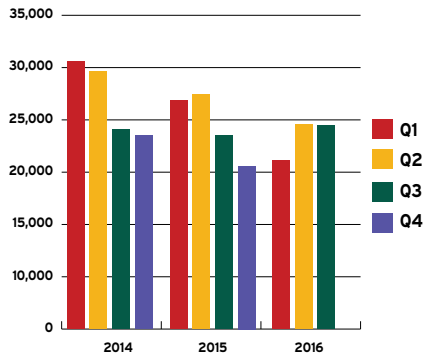


ECONOMIC DEVELOPMENT DASHBOARD REPORT FOR ROCK COUNTY, WISCONSIN

Q3 2016

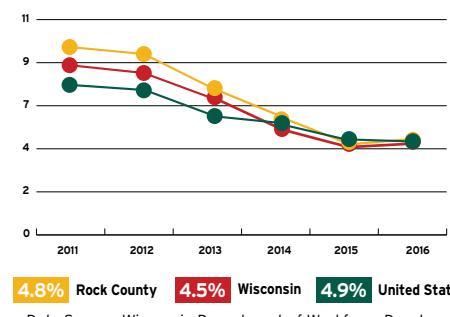
## Workforce

### Job Posting Activities



Data Source: SW WDB, EMSI

### Annual Unemployment



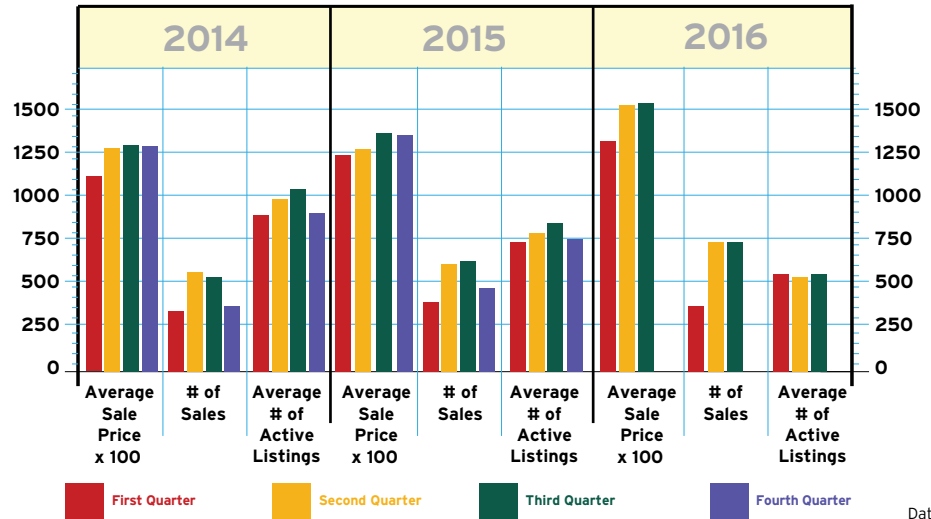
4.8% Rock County 4.5% Wisconsin 4.9% United States  
Data Source: Wisconsin Department of Workforce Development

**Incremental Movements as Rate Convergence Continues**

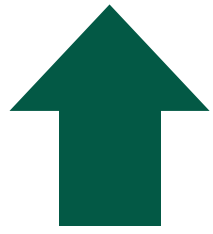
**Postings are Fueled by Healthcare and Transportation & Material Moving Occupations**

## Real Estate

### Residential Market Activity



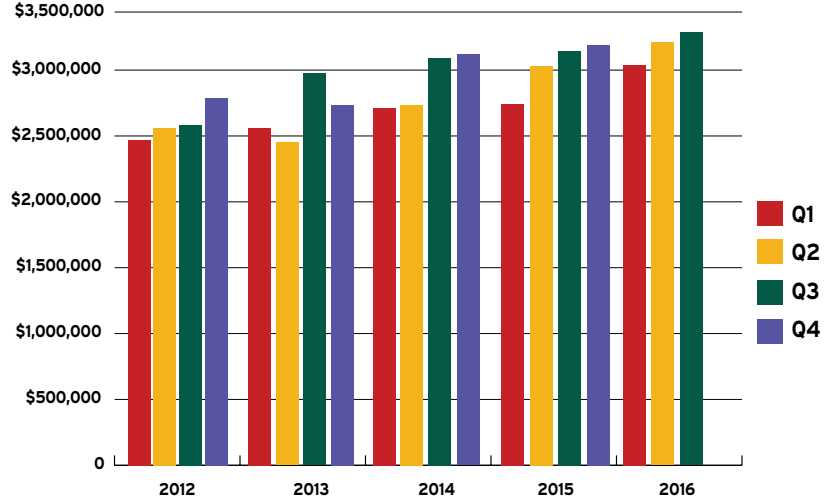
Data Source: South Central Wisconsin MLS Corporation



**Consistently Rising Price Points**

## Sales Activity

### Rock County Sales & Use Tax Collections



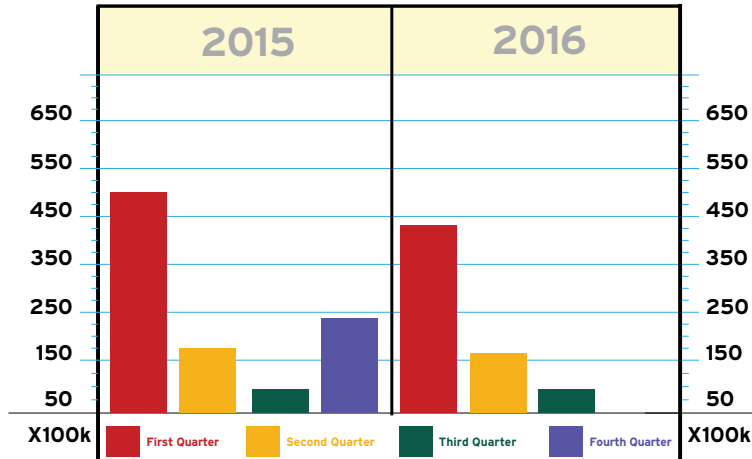
Data Source: Wisconsin Department of Revenue

**Robust & Record Setting Collections**

This information was collected from primary and secondary data sources deemed reliable. Please note that this information is subject to change without notice.

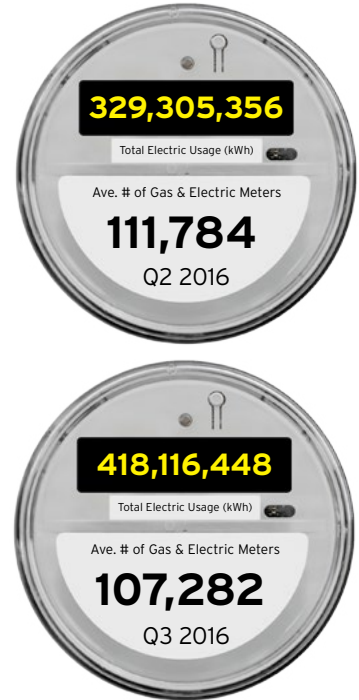
Meter & Usage Data

## Therms Usage



**Steady Development & Capacity Utilization are Spinning the Meters**

Data Source: Alliant Energy / WI Power & Light



Project Profile



Toledo Molding & Die (TMD), a global Tier 1/Tier 2 full service supplier of interior and air/fluid management systems, signed a long-term lease for a 105,000 SF facility in Beloit's Stateline Industrial Park. The building, which was constructed on spec earlier this spring, represents one of two industrial / warehousing projects that Hendricks Commercial Properties has announced it will deliver to the market.

TMD will be supplying the new Jeep Cherokee platform at the Fiat Chrysler Belvidere Assembly Plant, which is scheduled to launch May 2017. Once fully operational, TMD will have 118 full-time employees.

Headquartered in Toledo, OH, TMD has grown from a modest model and pattern shop into a globally recognized plastics injection and blow molding manufacturer. With 12 U.S. facilities and one Mexican operation, TMD's product

lines include molding, assembly and sequencing of interior components and molding and assembly of a variety of air induction, powertrain cooling, front end module, washer, and HVAC systems.

In addition to the spec building, an income tax credit package from the Wisconsin Economic Development Corporation and assistance from the City of Beloit helped with facilitating this project.



**Rock County Wisconsin**  
DEVELOPMENT ALLIANCE



For additional information visit:  
**RockCountyAlliance.com**  
**608 • 757 • 5598**