

ROCK READY INDEX

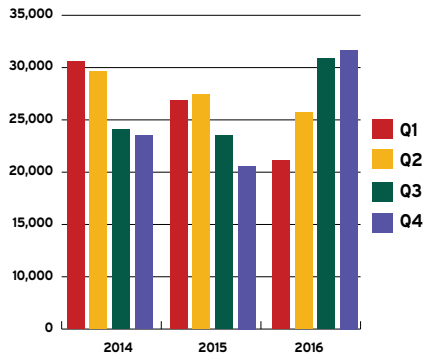


ECONOMIC DEVELOPMENT DASHBOARD REPORT FOR ROCK COUNTY, WISCONSIN

Q4 2016

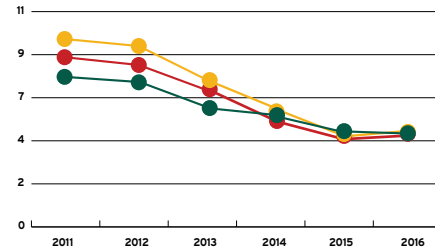
Workforce

Job Posting Activities



Data Source: SW WDB, EMSI

Annual Unemployment



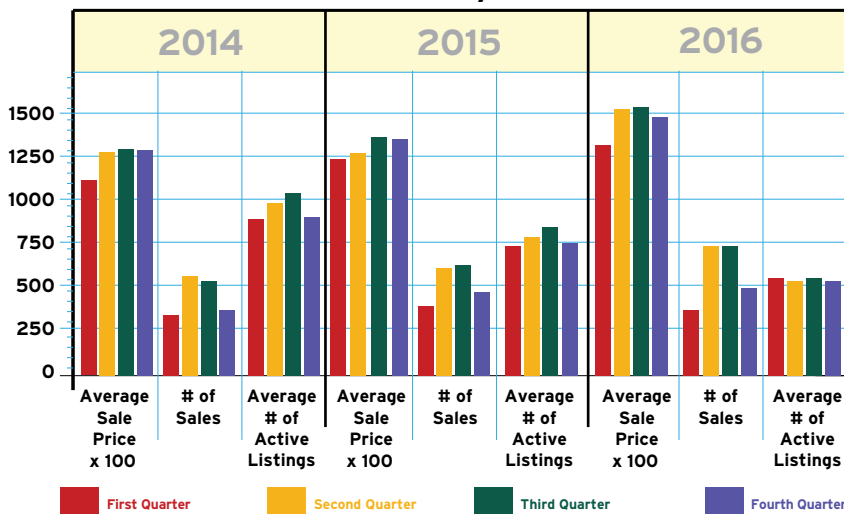
4.5% Rock County 4.3% Wisconsin 4.8% United States
Data Source: Wisconsin Department of Workforce Development

Strong Demand Reported from Various Occupational Categories

County, State and U.S. Rates Averaged 4.5% Throughout the Year

Real Estate

Residential Market Activity

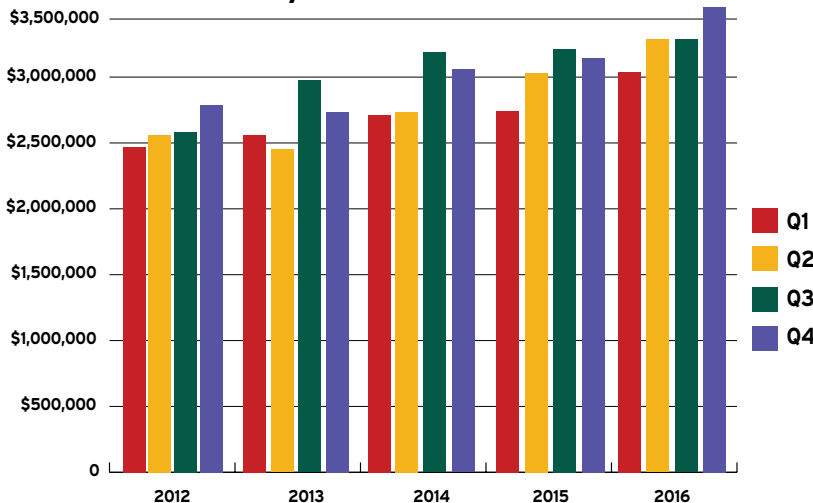


Data Source: South Central Wisconsin MLS Corporation

Increasing Sales & Price Points Fueled a Record Year

Sales Activity

Rock County Sales & Use Tax Collections

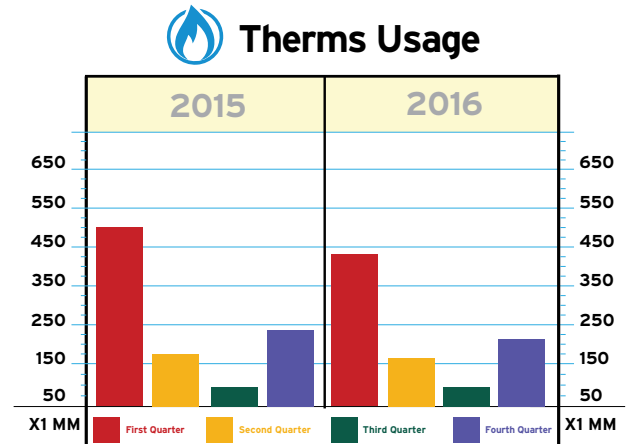
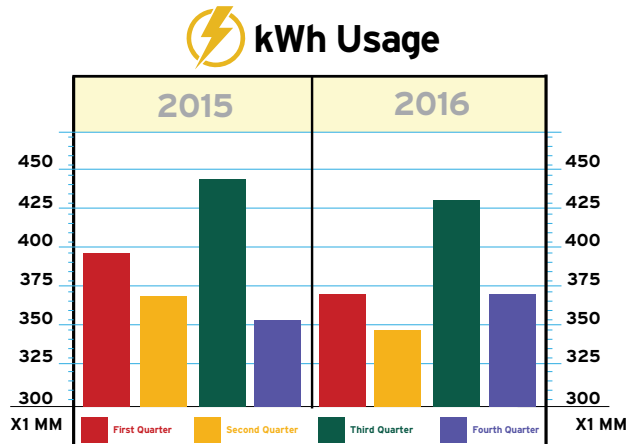


Data Source: Wisconsin Department of Revenue

A New Quarterly & Yearly Record

This information was collected from primary and secondary data sources deemed reliable. Please note that this information is subject to change without notice.

Meter & Usage Data



Commercial, Manufacturing / Warehousing and Residential Activities - Coupled with Seasonal Influences - Continually Impact Fuel Consumption

Data Source: Alliant Energy / WI Power & Light

Project Profile



Plastic Industries, Inc., a plastic packaging manufacturer that produces custom and stock bottles, has leased 75,000 SF at 2929 Venture Drive in Janesville's Beloit Ave. Industrial Corridor. The property, which is owned by STAG Industrial, is a multi-tenant building occupied by manufacturing and distribution firms. Once the facility's tenant improvements and equipment installations are completed in early 2017, Plastic Industries will begin operations and eventually have up to 30 full-time employees.

Headquartered in New Hampshire, Plastic Industries is a privately-held, blow-molding manufacturing company. With seven facilities located across the nation, Plastic Industries provides custom - as well as stock - bottles, containers, and canisters for the following markets: Specialty Beverage, Food / Food Service, Healthcare, Industrial / Household Cleaners and the Automotive aftermarkets. In addition to offering custom design and mold making capabilities, the company utilizes state-of-the-art technology and its production

facilities maintain industry recognized certifications (e.g. SQF Level II, AIB, IMS, etc.).

Beth Muscato, CEO of Plastic Industries commented, "We are excited to be expanding our manufacturing base in Janesville, Wisconsin, and investing and growing with the local community. We are a customer-centered, service-oriented company and look forward to expanding that focus in the upper mid-west."

