

# ROCK READY INDEX

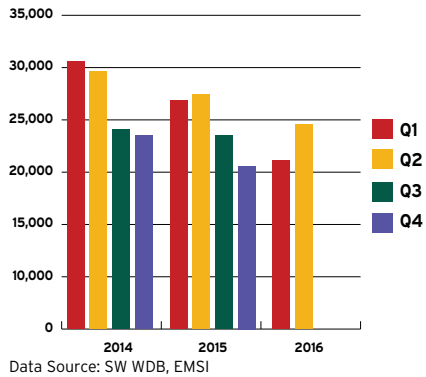


ECONOMIC DEVELOPMENT DASHBOARD REPORT FOR ROCK COUNTY, WISCONSIN

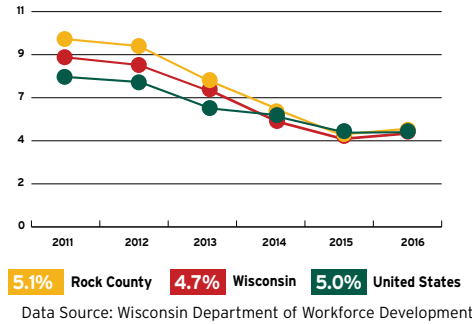
Q2 2016

## Workforce

### Job Posting Activities



### Annual Unemployment

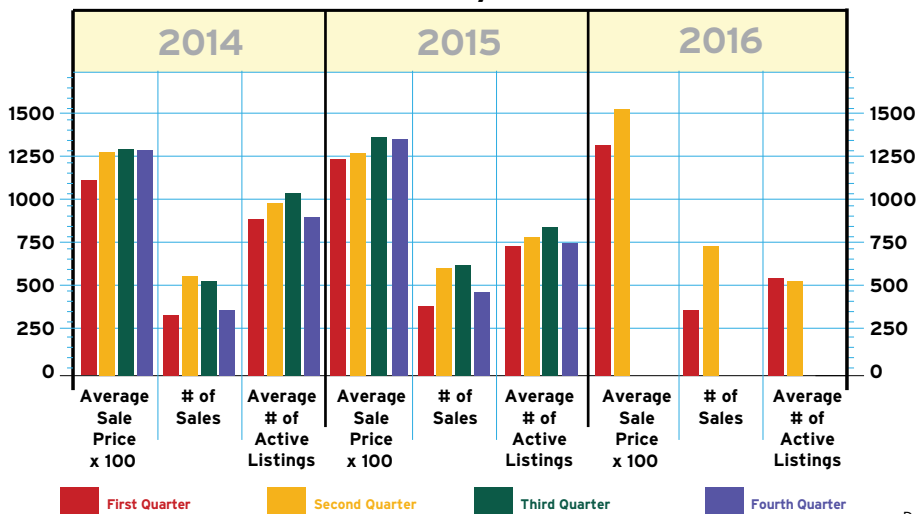


**Consistent,  
Steady  
Rates**

**Posting Activities Reflect Regional and Statewide Trends**

## Real Estate

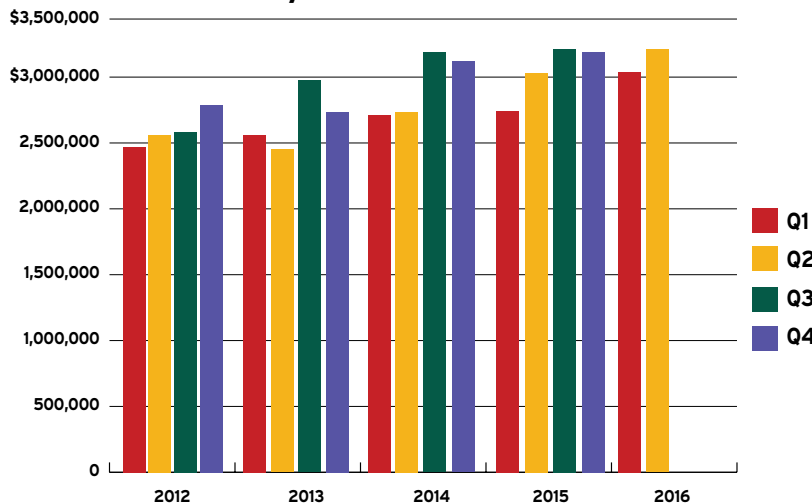
### Residential Market Activity



**Record Setting  
Pricing &  
Transactional  
Activities**

## Sales Activity

### Rock County Sales & Use Tax Collections

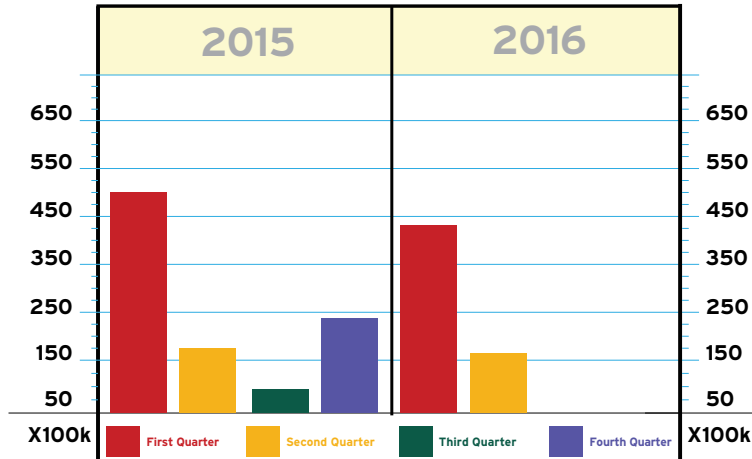


**Highest Quarterly  
Total During its  
10-Year History**

This information was collected from primary and secondary data sources deemed reliable. Please note that this information is subject to change without notice.

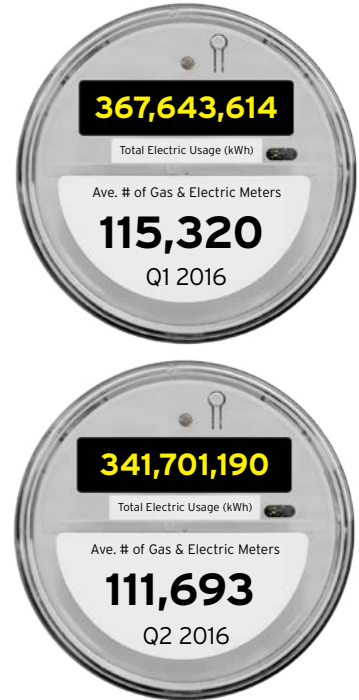
Meter & Usage Data

## Therms Usage



**Figures are Reflective of Seasonal Influences vs. Economic Fluctuations**

Data Source: Alliant Energy / WI Power & Light



Project Profile

### Here's a Sampling of Economic Development Activity Announced During Q2 2016

 <p><b>AMTEC</b></p> <ul style="list-style-type: none"> <li>• Defense Contractor</li> <li>• 31,104 SF Expansion</li> <li>• \$1.5 Million Investment</li> <li>• Operational Q4 2016</li> </ul>	 <p><b>Snyder's-Lance</b></p> <ul style="list-style-type: none"> <li>• Kettle Brand Potato Chip Manufacturer</li> <li>• New Machinery &amp; Equipment</li> <li>• \$9 Million Investment</li> <li>• Operational Q4 2016</li> </ul>
 <p><b>Janesville Kia &amp; Subaru</b></p> <ul style="list-style-type: none"> <li>• Auto Dealership</li> <li>• 36,534 SF Expansion</li> <li>• \$2.7 Million Investment</li> <li>• Operational Q4 2016</li> </ul>	 <p><b>Rinehart Properties</b></p> <ul style="list-style-type: none"> <li>• Townhome Development Near Central Business District</li> <li>• New &amp; Renovated Units</li> <li>• \$1.75 Million Investment</li> <li>• Construction Complete Q2 2017</li> </ul>
  <p><b>Edgerton Pharmacy &amp; Boutique</b> <b>Blackhawk Community Credit Union</b></p> <ul style="list-style-type: none"> <li>• Pharmacy &amp; Specialty Retail and Financial Institution</li> <li>• 16,624 Expansion &amp; Relocation</li> <li>• Staffing Impacts Projected at 24-26</li> <li>• Operational Q1 2017</li> </ul>	 <p><b>Van Brocklin Electric</b></p> <ul style="list-style-type: none"> <li>• Electrical Contractor</li> <li>• 9,880 SF Expansion &amp; Relocation</li> <li>• \$650,000 Investment</li> <li>• Operational Q4 2016</li> </ul>

