

# ROCK READY INDEX

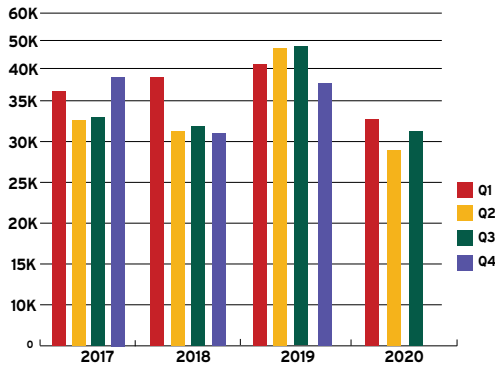


ECONOMIC DEVELOPMENT DASHBOARD REPORT FOR ROCK COUNTY, WISCONSIN

Q3 2020

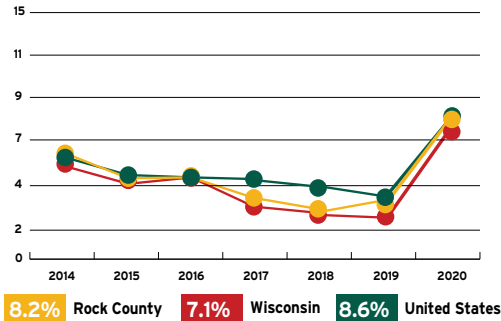
## Workforce

### Job Posting Activities

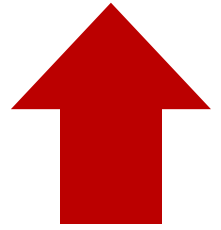


Data Source: SW WDB, EMSI

### Annual Unemployment



Data Source: Wisconsin Department of Workforce Development

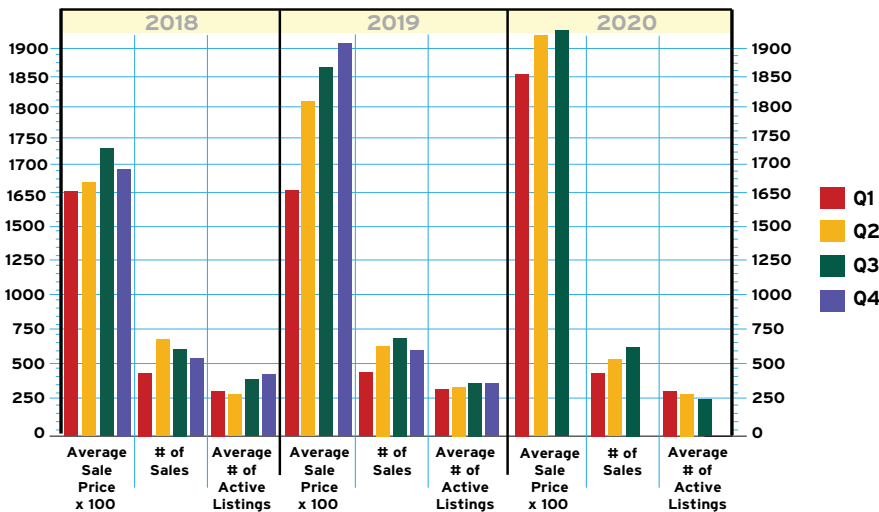


**While Higher than Normal, Rates are Declining**

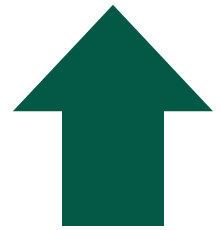
**Employers Are Hiring During the Pandemic**

## Real Estate

### Residential Market Activity



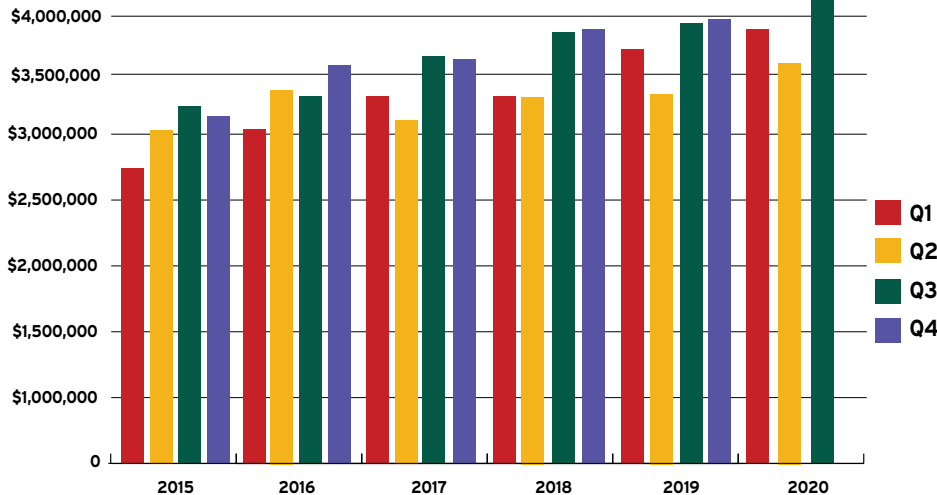
Data Source: South Central Wisconsin MLS Corporation



**Pricing Sets New Record**

## Sales Activity

### Rock County Sales & Use Tax Collections



Data Source: Wisconsin Department of Revenue

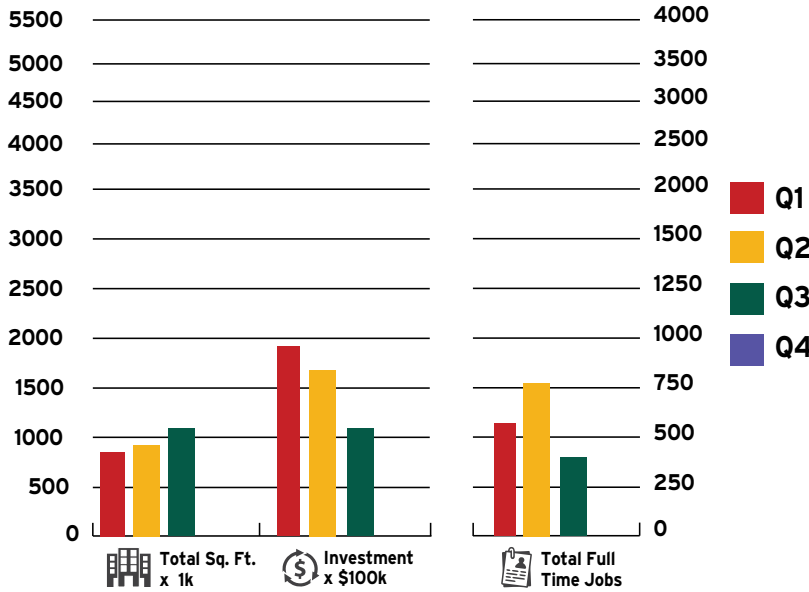


**Another Blockbuster Quarter**

This information was collected from primary and secondary data sources deemed reliable. Please note that this information is subject to change without notice.

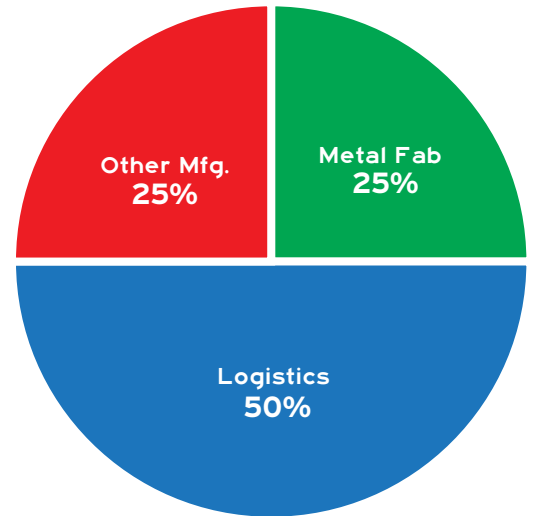
**Economic Development Pipeline**

### Real Estate, Investment & Employment Impacts



Source: RCDA ED Project Tracker, which provides an aggregate snapshot of the industrial/warehousing and select commercial development opportunities expressing an interest in SC WI, the Janesville-Beloit MSA and/or the Stateline area.

### Industry Sectors



**Activity Reflects Macro-Level Sentiments**

**Project Profile**

## THE LINCOLN ACADEMY



Construction activities began in September on the 112,000SF, \$25 Million, independent public charter school that is located on the campus of the Beloit Eclipse Center. The Lincoln Academy, which is scheduled to open in fall 2021, will eventually have the capacity to serve up to 700 students from K4 through the 12th grade. While primarily intended to serve the educational needs of students in the Beloit area, the Lincoln Academy will also be open to any student with Wisconsin residency. If the volume of student applications exceeds

the school's capacity, a random lottery selection process will be used to determine enrollment. As a public school, students will not be charged to attend the Lincoln Academy.

In addition to meeting the same Department of Public Instruction's academic, accountability and assessment standards, the Lincoln Academy will maintain its own set of high standards. As such, the Academy will provide a positive, supportive and academically challenging

environment where character education elements are deeply embedded into the curriculum. Extra instructional time will be allocated for literacy and math; and there will be a strong requirement for parental and/or guardian engagement and communication.

For more information about the Lincoln Academy, including enrollment details, visit [www.kidsfirstbeloit.com](http://www.kidsfirstbeloit.com).

