

FOR LEASE
615 N PARKER DRIVE, JANESVILLE, WI



PROPERTY OVERVIEW

Total Building SF:	30,230 SF
Office Space:	5,000 SF
Site Size:	2.0 AC
Zoning:	M-3 Central Light Industrial
Clear Height:	10'-14'
Docks:	One (1) - 9' x 10' with leveler One (1) - 9' x 8' Two (2) 10' x 8' enclosed semi dock/van height
Construction:	Masonry
Sprinkler:	Wet
Power:	400A, 270V, 3 Phase
Restroom:	3

Features

- 3.7 miles West of I-90 and 3 miles South of Highway 14
- 4,600 SF mezzanine storage
- 2 access points via N Main Street and via N Parker Drive



Economics

Lease Rate:	\$4.00/SF NNN
OPEX:	\$0.35 / SF

NICK UNGER
REAL ESTATE ADVISOR
414.203.3016
nunger@boerke.com

ROBERT O FULFORD II
REAL ESTATE ADVISOR
214.732.4169
rfulford@boerke.com

TAREK SALEH
REAL ESTATE ADVISOR
608.347.6192
tsaleh@boerke.com



MILWAUKEE OFFICE
731 N Jackson Street
Suite 700
Milwaukee, WI 53202

MADISON OFFICE
4602 S Biltmore Lane
Suite 112
Madison, WI 53718

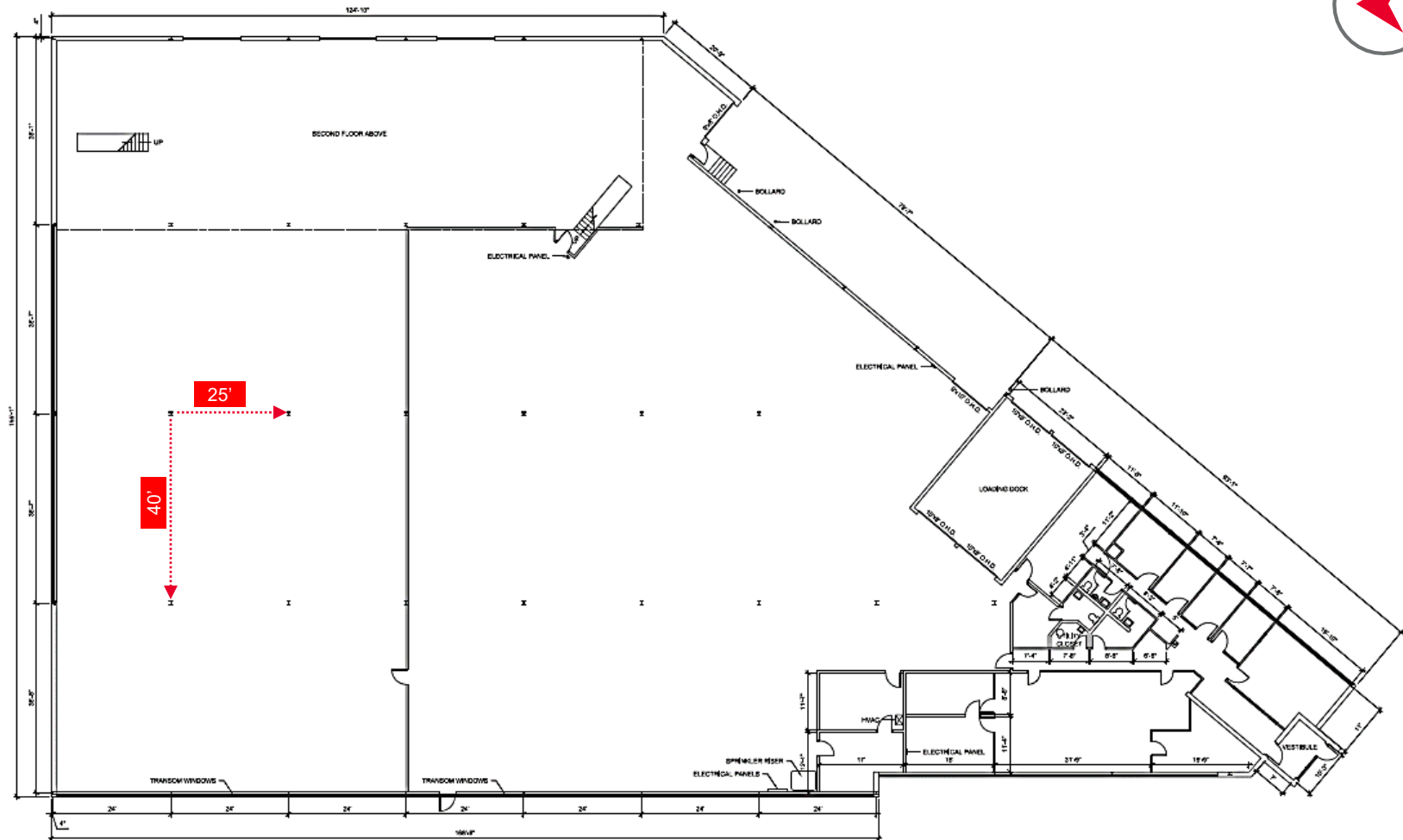
Boerke.com

The Boerke Company, Inc. / Independently Owned and Operated / A Member of the Cushman & Wakefield Alliance

Cushman & Wakefield Copyright 2021. No warranty or representation, express or implied, is made to the accuracy or completeness of the information contained herein, and same is submitted subject to errors, omissions, change of price, rental or other conditions, withdrawal without notice, and to any special listing conditions imposed by the property owner(s). As applicable, we make no representation as to the condition of the property (or properties) in question.

FOR LEASE
615 N PARKER DRIVE, JANESVILLE, WI

FLOOR PLAN



NICK UNGER
REAL ESTATE ADVISOR
414.203.3016
nunger@boerke.com

ROBERT O FULFORD II
REAL ESTATE ADVISOR
214.732.4169
rfulford@boerke.com

TAREK SALEH
REAL ESTATE ADVISOR
608.347.6192
tsaleh@boerke.com



MILWAUKEE OFFICE
731 N Jackson Street
Suite 700
Milwaukee, WI 53202

MADISON OFFICE
4602 S Biltmore Lane
Suite 112
Madison, WI 53718

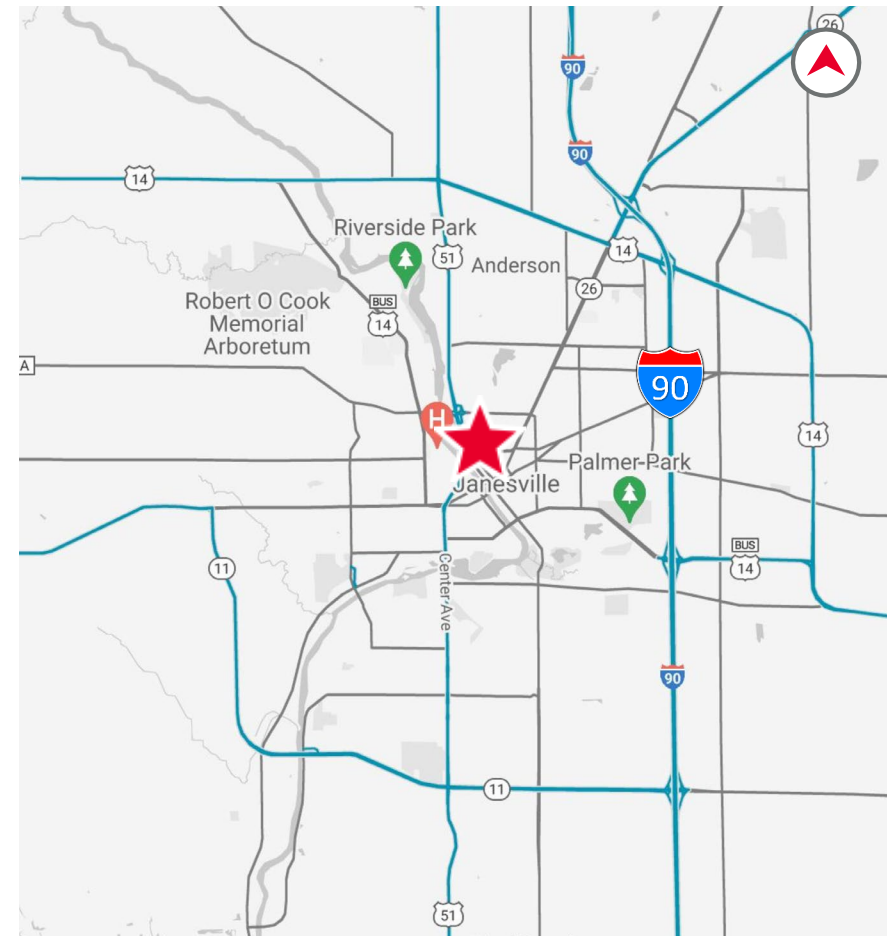
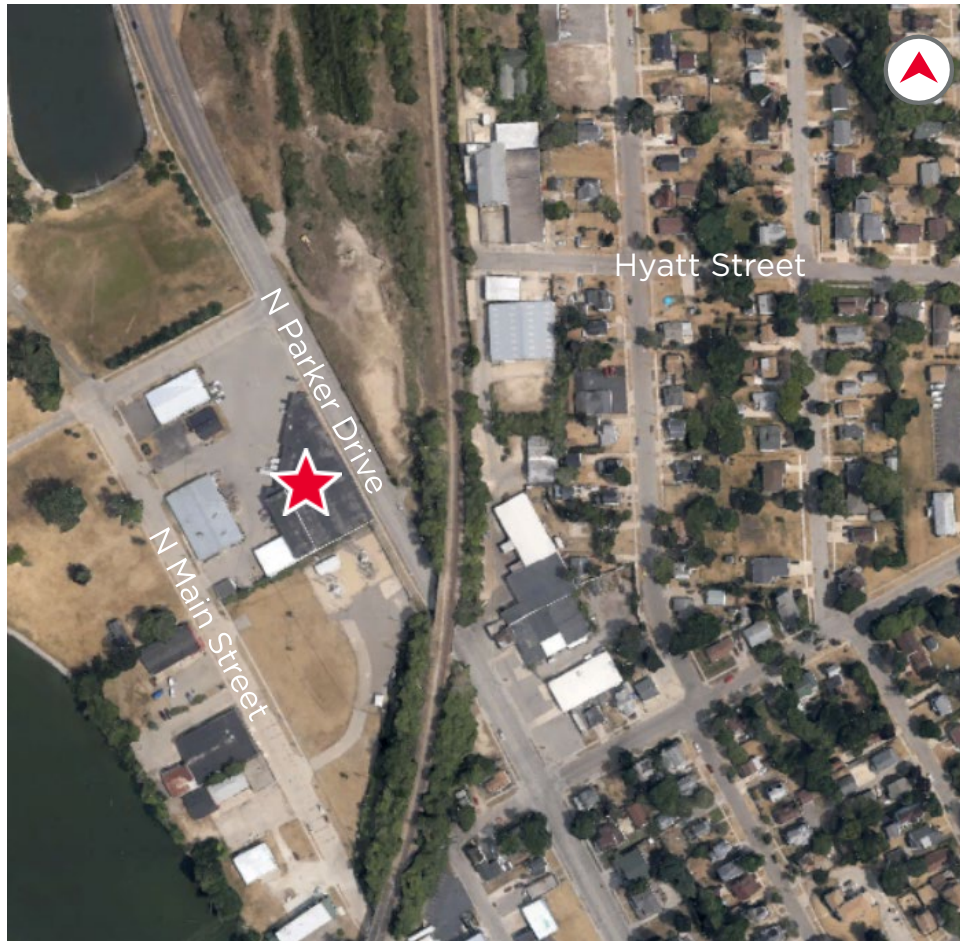
Boerke.com

The Boerke Company, Inc. / Independently Owned and Operated / A Member of the Cushman & Wakefield Alliance

Cushman & Wakefield Copyright 2021. No warranty or representation, express or implied, is made to the accuracy or completeness of the information contained herein, and same is submitted subject to errors, omissions, change of price, rental or other conditions, withdrawal without notice, and to any special listing conditions imposed by the property owner(s). As applicable, we make no representation as to the condition of the property (or properties) in question.

FOR LEASE
615 N PARKER DRIVE, JANESVILLE, WI

AREA MAP



NICK UNGER
REAL ESTATE ADVISOR
414.203.3016
nunger@boerke.com

ROBERT O FULFORD II
REAL ESTATE ADVISOR
214.732.4169
rfulford@boerke.com

TAREK SALEH
REAL ESTATE ADVISOR
608.347.6192
tsaleh@boerke.com



MILWAUKEE OFFICE
731 N Jackson Street
Suite 700
Milwaukee, WI 53202

MADISON OFFICE
4602 S Biltmore Lane
Suite 112
Madison, WI 53718

Boerke.com

The Boerke Company, Inc. / Independently Owned and Operated / A Member of the Cushman & Wakefield Alliance

Cushman & Wakefield Copyright 2021. No warranty or representation, express or implied, is made to the accuracy or completeness of the information contained herein, and same is submitted subject to errors, omissions, change of price, rental or other conditions, withdrawal without notice, and to any special listing conditions imposed by the property owner(s). As applicable, we make no representation as to the condition of the property (or properties) in question.

FOR LEASE
615 N PARKER DRIVE, JANESVILLE, WI



CUSHMAN &
WAKEFIELD

BOERKE

DRIVE TIME MAP

DRIVE TIMES TO KEY AREAS

I-39/I-90 (NEAREST ON-RAMP)

12 MINUTES / 3.9 MILES

US-51

1 MINUTE / 0 MILES

US-14

4 MINUTES / 2.9 MILES

US-12 VIA E COUNTY RD N

27 MINUTES / 19.9 MILES

DOWNTOWN MADISON VIA I-90

47 MINUTES / 40.4 MILES

DANE COUNTY REGIONAL AIRPORT

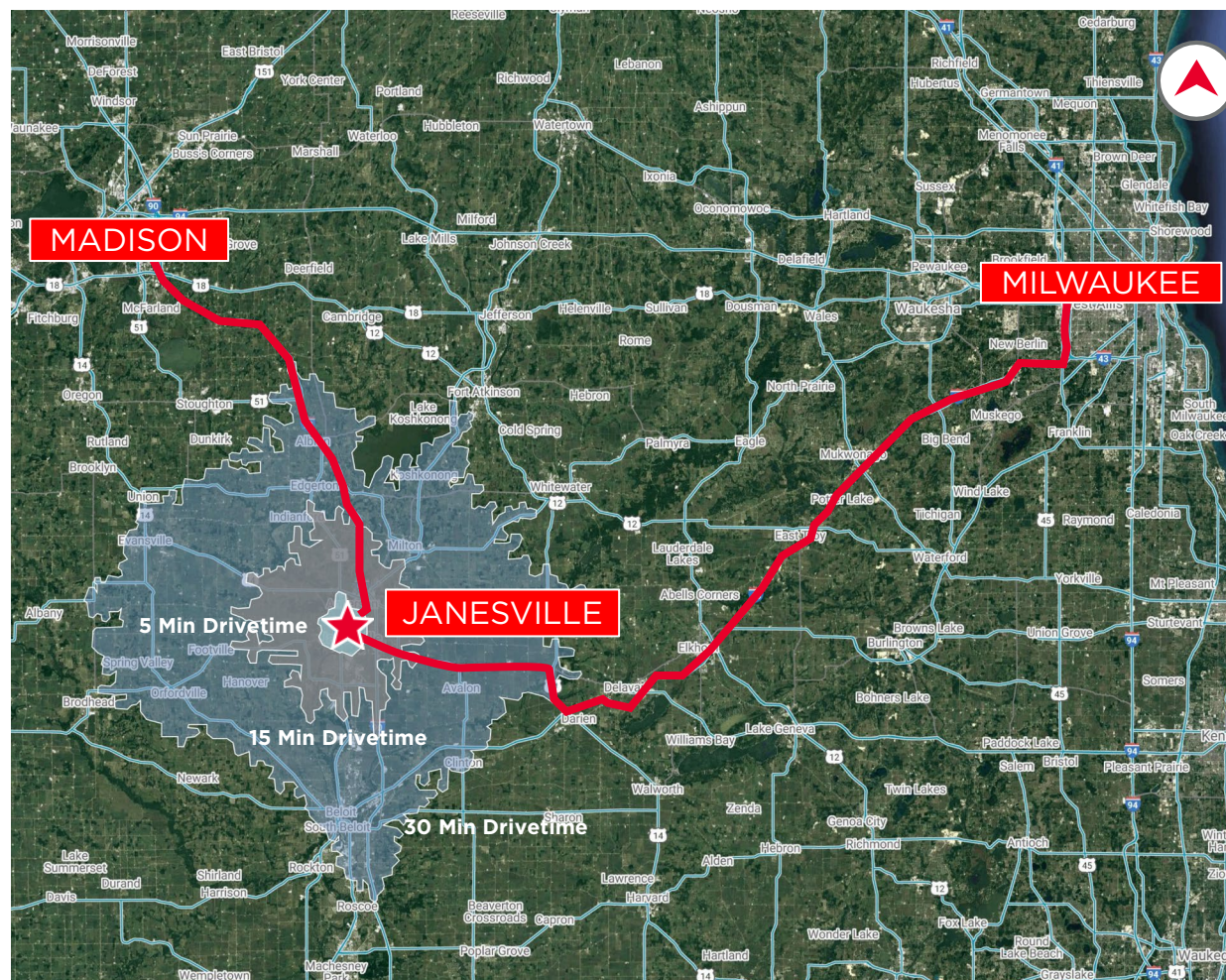
45 MINUTES / 41.6 MILES

MILWAUKEE, WI VIA I-43

1 HOUR 20 MINUTES / 76.6 MILES

ROCKFORD, IL VIA I-90

46 MINUTES / 35.5 MILES



NICK UNGER

REAL ESTATE ADVISOR
414.203.3016
nunger@boerke.com

ROBERT O FULFORD II

REAL ESTATE ADVISOR
214.732.4169
rfulford@boerke.com

TAREK SALEH

REAL ESTATE ADVISOR
608.347.6192
tsaleh@boerke.com

OWNED BY:



MILWAUKEE OFFICE

731 N Jackson Street
Suite 700
Milwaukee, WI 53202

MADISON OFFICE

4602 S Biltmore Lane
Suite 112
Madison, WI 53718

Boerke.com

The Boerke Company, Inc. / Independently Owned and Operated / A Member of the Cushman & Wakefield Alliance

Cushman & Wakefield Copyright 2021. No warranty or representation, express or implied, is made to the accuracy or completeness of the information contained herein, and same is submitted subject to errors, omissions, change of price, rental or other conditions, withdrawal without notice, and to any special listing conditions imposed by the property owner(s). As applicable, we make no representation as to the condition of the property (or properties) in question.

STATE OF WISCONSIN

DISCLOSURE TO NON-RESIDENTIAL CUSTOMERS

Prior to negotiating on your behalf the brokerage firm, or an agent associated with the firm, must provide you the following disclosure statement:

DISCLOSURE TO CUSTOMERS

You are a customer of the brokerage firm (hereinafter Firm). The Firm is either an agent of another party in the transaction or a subagent of another firm that is the agent of another party in the transaction. A broker or a salesperson acting on behalf of the Firm may provide brokerage services to you. Whenever the Firm is providing brokerage services to you, the Firm and its brokers and salespersons (hereinafter Agents) owe you, the customer, the following duties:

- (a) The duty to provide brokerage services to you fairly and honestly.
- (b) The duty to exercise reasonable skill and care in providing brokerage services to you.
- (c) The duty to provide you with accurate information about market conditions within a reasonable time if you request it, unless disclosure of the information is prohibited by law.
- (d) The duty to disclose to you in writing certain Material Adverse Facts about a property, unless disclosure of the information is prohibited by law. (See Definition of Material Adverse Facts below).
- (e) The duty to protect your confidentiality. Unless the law requires it, the Firm and its Agents will not disclose your confidential information or the confidential information of other parties.
- (f) The duty to safeguard trust funds and proposals in an objective and unbiased manner and disclose the advantages and disadvantages of the proposals. other property held by the Firm or its Agents.
- (g) The duty, when negotiating, to present contract proposals in an objective and unbiased manner and disclose the advantages and disadvantages of the proposals.
- Please review this information carefully. An Agent of the Firm can answer your questions about brokerage services, but if you need legal advice, tax advice, or a professional home inspection, contact an attorney, tax advisor, or home inspector. This disclosure is required by section 452.135 of the Wisconsin statutes and is for information only. It is a plain-language summary of the duties owed to a customer under section 452.133(1) of the Wisconsin statutes.

CONFIDENTIALITY NOTICE TO CUSTOMERS

The Firm and its Agents will keep confidential any information given to the Firm or its Agents in confidence, or any information obtained by the Firm and its Agents that a reasonable person would want to be kept confidential, unless the information must be disclosed by law or you authorize the Firm to disclose particular information. The Firm and its Agents shall continue to keep the information confidential after the Firm is no longer providing brokerage services to you.

- The following information is required to be disclosed by law:
 1. Material Adverse Facts, as defined in Wis. Stat. § 452.01(5g) (see “Definition of Material Adverse Facts” below).
 2. Any facts known by the Firm or its Agents that contradict any information included in a written inspection report on the property or real estate that is the subject of the transaction.

To ensure that the Firm and its Agents are aware of what specific information you consider confidential, you may list that information below. At a later time, you may also provide the Firm or its Agents with other Information you consider to be confidential.

CONFIDENTIAL INFORMATION:

NON- CONFIDENTIAL INFORMATION *(the following information my be disclosed by the Firm and its Agents):*

(Insert information you authorize to be disclosed, such as financial qualification information.)

DEFINITION OF MATERIAL ADVERSE FACTS

A "Material Adverse Fact" is defined in Wis. Stat. § 452.01(5g) as an Adverse Fact that a party indicates is of such significance, or that is generally recognized by a competent licensee as being of such significance to a reasonable party, that it affects or would affect the party's decision to enter into a contract or agreement concerning a transaction or affects or would affect the party's decision about the terms of such a contract or agreement.

An "Adverse Fact" is defined in Wis. Stat. § 452.01(1e) as a condition or occurrence that a competent licensee generally recognizes will significantly and adversely affect the value of the property, significantly reduce the structural integrity of improvements to real estate, or present a significant health risk to occupants of the property; or information that indicates that a party to a transaction is not able to or does not intend to meet his or her obligations under a contract or agreement made concerning the transaction.

NOTICE ABOUT SEX OFFENDER REGISTRY

You may obtain information about the sex offender registry and persons registered with the registry by contacting the Wisconsin Department of Corrections on the Internet at <http://www.doc.wi.gov> or by telephone at 608-240-5830.