

ROCK READY INDEX

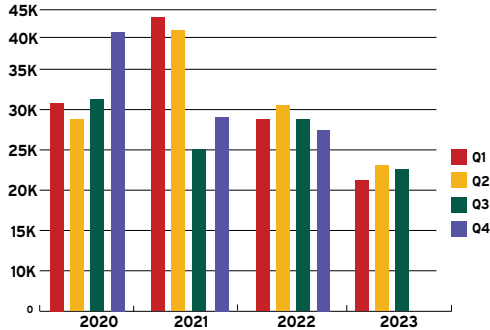


ECONOMIC DEVELOPMENT DASHBOARD REPORT FOR ROCK COUNTY, WISCONSIN

Q3 2023

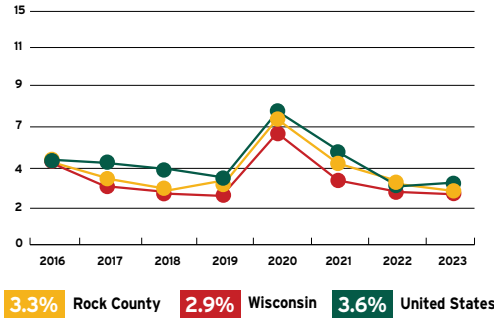
Workforce

Job Posting Activities



Data Source: SW WDB, EMSI

Annual Unemployment



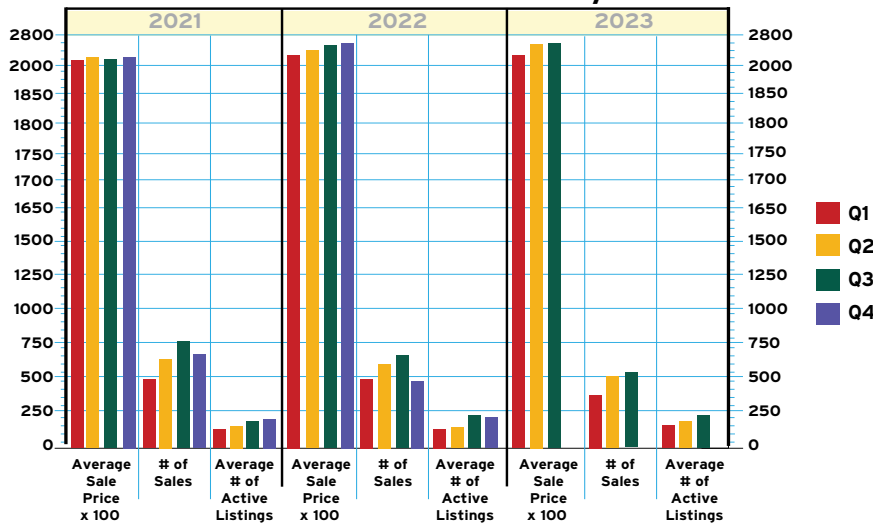
Data Source: Wisconsin Department of Workforce Development

Stabilized Rates

Hiring Needs Remain Steady

Real Estate

Residential Market Activity



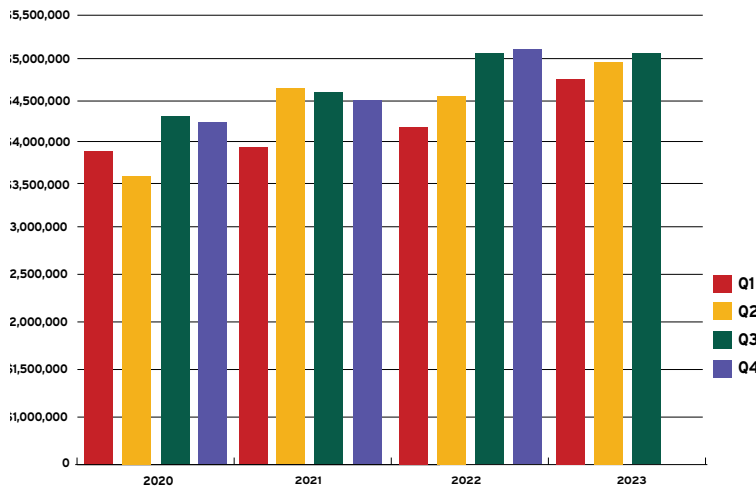
Data Source: South Central Wisconsin MLS Corporation

Record Q3 Pricing Benchmarks



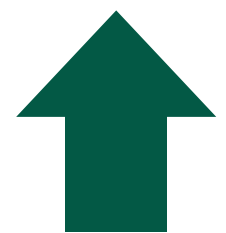
Sales Activity

Rock County Sales & Use Tax Collections



Data Source: Wisconsin Department of Revenue

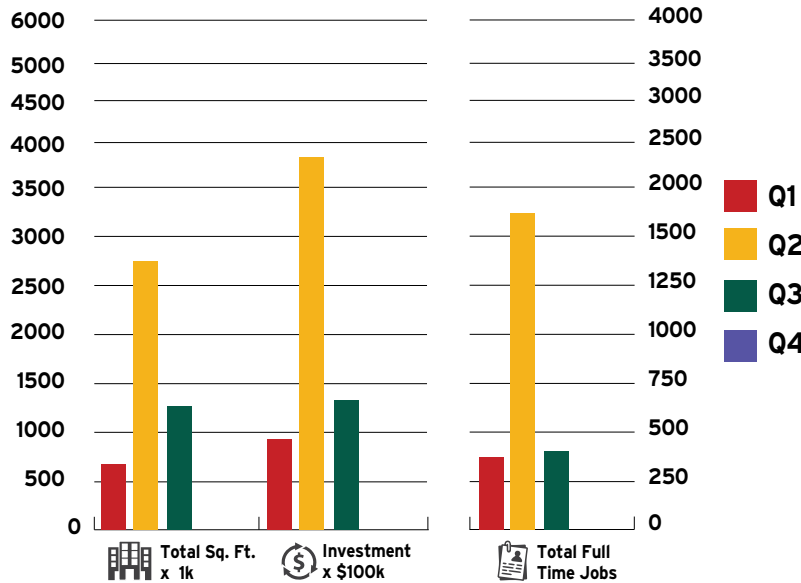
New Q3 Milestone



This information was collected from primary and secondary data sources deemed reliable. Please note that this information is subject to change without notice.

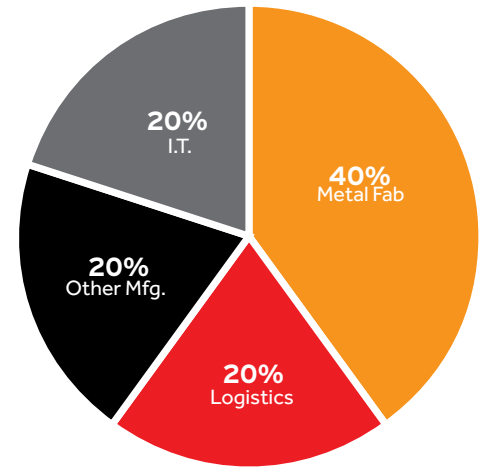
Economic Development Pipeline

Real Estate, Investment & Employment Impacts



Source: RCDA ED Project Tracker, which provides an aggregate snapshot of the industrial/warehousing and select commercial development opportunities expressing an interest in SC WI, the Janesville-Beloit MSA and/or the Staline area.

Industry Sectors



Diversification Drives the Pipeline

Project Profile



STE Begins Facility Expansion, Relocation Project

Stainless Tank & Equipment (STE) announced that it's constructing a state-of-the-art facility at the corner of CTH S and I-39/90. As the most northern interstate exit for the Beloit area, this 43-acre site will be the new home for STE's 345,000 (+/-) SF operations. This multimillion-dollar facility will feature extensive robotics and automation investments to enhance STE's capabilities and capacities. In addition to retaining its current workforce, this expansion and relocation project – which has been slated for an early 2025 completion date – will enable STE to significantly increase its staffing levels, as well.

STE has positioned itself as a leading designer and fabricator of custom, bulk tanks and trailers that service the chemical, milk, and sanitary transport sectors. "STE is part of the Hendricks

Holding Company, Inc. portfolio of businesses that manufactures a quality product, by quality people. This new location allows us to accommodate our growth initiatives and our dedication to our quality workforce, the greater Beloit community, Rock County and Wisconsin", said Brent Fox, CEO of Hendricks Holding Company, Inc.

STE's new facility was designed by Schlosser Steel Buildings and Corporate Contractors Inc. (CCI); meanwhile, engineering services were provided by JDR and Combs & Associates. CCI is serving as the project's general contractor.

For additional information about STE, visit www.ste-usa.com.